

The Hilti logo is positioned in the top right corner of the page. It consists of the word "HILTI" in a bold, white, sans-serif font, centered within a red rectangular background.The title "CIVIL ENGINEERING TRADE CATALOGUE" is displayed in large, white, bold, sans-serif capital letters. It is overlaid on a large, diagonal red graphic element that cuts across the upper left and center of the image. The background of the entire page is a photograph of a construction site for a concrete bridge over a river, featuring a yellow tower crane and a worker on the bridge deck.The Nuron logo is located in the bottom left corner. It features the word "NURON" in a bold, sans-serif font, with the letter "R" highlighted in red. The logo is set against a white background that tapers to the right.

CONTENTS

CONCRETE BREAKING APPLICATION

- Breaking
- Cleaning

BATTERIES WITHOUT COMPROMISE

- Design
- Detection
- Cutting
- Drill/Clean
- Inject
- Inspect

NURON

ONE CORDLESS PLATFORM



Nuron will redefine the way you work — and directly impact your bottom line.

Whether you're new to Hilti or considering an upgrade to Nuron, this all-on-one platform can maximize your productivity and help take charge of the most demanding projects so you can start and finish jobs faster.

A connected cordless platform to handle the broadest range of light- to heavy-duty construction jobs and projects, Nuron has you covered.



LONGER RUN TIMES

A fully compatible platform that enables optimization of your tool crib, you can count on higher efficiency than corded or petrol-powered tools, helping your teams work with **more work-per-charge, more speed** and **less downtime**.



POWER-PACKED PERFORMANCE

The groundbreaking new battery technology packs **unmatched power** and **performance for demanding jobs** like breaking concrete, serial drilling into tough materials, and grinding and cutting metal.



DURABILITY AND SAFETY

All Nuron tools and batteries come with **improved durability** and more **built-in safety features** to help withstand the harshest conditions, keep your crews safe, and reduce risks that contribute to unnecessary costs and delays on your jobsites.



STREAMLINE YOUR TOOL CRIB AND JOBSITE MANAGEMENT

We're here to help simplify your day-to-day. All Nuron tools are designed with **integrated data-driven services** that help maintain tool and battery health while minimizing downtime and the burden of managing repairs.

NURON

HELP STREAMLINE YOUR DAY-TO-DAY

Nuron offers connected tools and batteries for more transparency to your tools and how they're being used, helping you improve tool crib management and jobsite productivity — with even more services and connectivity enabled for Fleet and ON!Track customers.

Hilti Tool Services



Tool Fleet Management
Better control your tools and your costs. We help manage your tools so you can focus on managing your business.



ON!Track Asset Management
Designed to help make it easier to manage your business, tools, and jobsites



In-House Repair Services
Simple to request tool repair services, often with a 3 to 5 working days turnaround

HILTI

ADDED NURON BENEFITS

Help eliminate jobsite delays and unnecessary costs while freeing up hours to use where they're needed most — allowing you to boost your efficiency, all on one platform.



BATTERY STATE OF HEALTH

- Quickly gauge charge levels
- Automatic battery health scan and replacement service



TOOL USAGE INSIGHTS

- Last charged location
- Know where and who is using tools
- Identify and locate idle, underused, and hoarded tools

[Click to learn more](#)

NURON

BATTERIES WITHOUT COMPROMISE



THE NURON CORDLESS BATTERY DIFFERENCE



Two additional spring-loaded plugs deliver **twice the power** to your light to heaviest-duty jobs



Shock absorbing bumpers have been added to the outside of the battery for **increased drop protection**



New potted casing **protect electronics** from moisture, dust and other contaminants



Redesigned battery cell holders provide improved heat management to **enable greater performance**

Hilti Nuron cordless batteries not only bring you more connectivity, performance and the flexibility to use the same set of interchangeable batteries for all your tools — they've also been designed to sustain the toughest of jobsites — making your job just a little bit simpler.



Stored insights **automatically upload** when batteries are charged



Intuitive batteries help you stay ahead by collecting information on **usage, location and health data** while you work

REBAR APPLICATION



DESIGN

80% TIME REDUCTION with PROFIS Rebar



DETECTION

SAVE 60% of TIME by eliminating rebar strikes



CUTTING

Effortlessly cut rebars with Hilti cordless grinders and saws



DRILL/CLEAN

Reduce drilling time by **50%** with **SAFESET** and eliminate cleaning



INJECT

SAVE COST with a cordless dispenser and reduce mortar wastage by **20%**



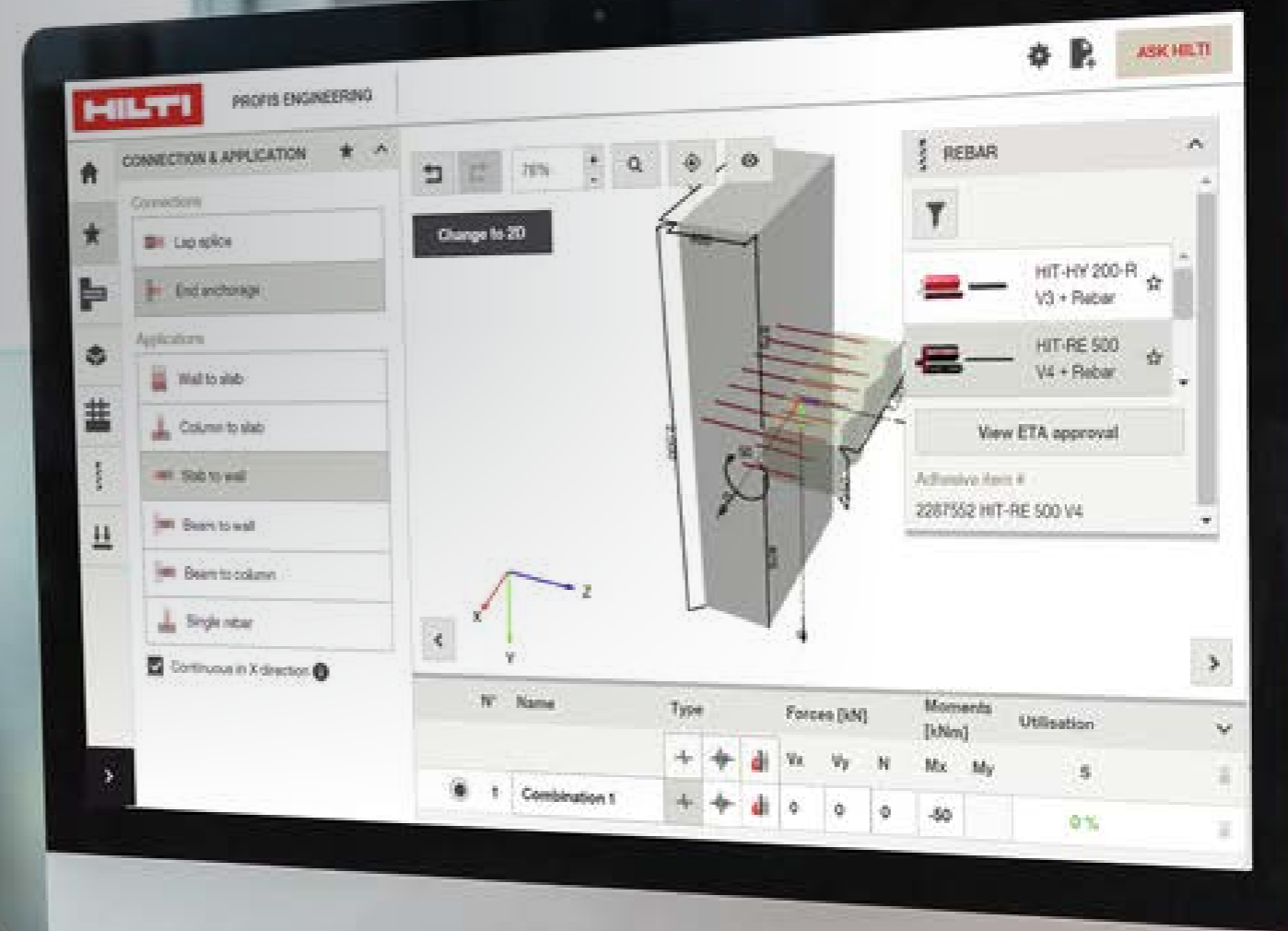
INSPECT

DETERMINE proof loading and pull-out resistance on the jobsite



NURON

DESIGN



PROFIS REBAR DETAILING SOLUTION

Rebar detailing software for quick and economical design of post-installed rebar according to building codes and regulations

- Makes post-installed rebar connections as easy to design as anchor fastenings
- Stay compliant with the latest codes and design reporting.
- Comprehensive static and seismic calculation options.

Buy Now

DID YOU KNOW? 

INTERESTING FACT

Post-installed rebars play a critical role in the design of concrete to concrete connection. At this stage the load of the structure and other influencing factors are taken into consideration to calculate the dimensions of the rebar including

- Embedment depth and diameter of the rebar
- Designing for seismic applications, fatigue loading or dynamic loading
- Designing connections using the latest building codes and standards

NURON

SCANNING



PS 85 WALL SCANNER

Easy-to-use wall scanner and stud finder for hit prevention when drilling or cutting near embedded objects

- Versatile and user-friendly wall scanner to help you avoid damage caused by drilling in the wrong place
- Easier to use – large display, efficient menus and the option to export scan data via SD card
- Upgraded ergonomics – light with large handle to keep the tool firmly in your grip
- Built to last – shock- and dust- resistant to better withstand construction site conditions
- Hilti battery platform – power this wall scanner using the same Li-ion battery as all your other Hilti 12V cordless tools

[Buy Now](#)



PS 300 FERROSCAN SYSTEM

Concrete detector for rebar localisation, depth measurement and size estimation in structural analysis

- Integrated display provides rebar layout visuals in top view and sectional view for on-the-spot structural analysis
- Smart algorithm helps accurate depth measurements for rebar
- Wide sensor area enables quick and easy scan over large areas
- Record scan data for documentation and structural analysis

[Buy Now](#)

NURON



PS 1000 X-SCAN CONCRETE SCANNER

Efficient concrete scanner for structural analysis and to locate embedded objects in multiple layers

- Provides real-time view of the inside of concrete structures and generates accurate images automatically for direct on-site evaluation
- Three scan modes for specific applications – Quickscan detection, Quickscan recording and Imagescan
- Displays a top view and cross sections of the scan in 2D and 3D for easy object mapping and multilayer identification
- Compact all-in-one design offers easy operation, plus unmatched data visualisation means hundreds of square metres of concrete can be inspected in a day
- Powerful monitor for in-depth, on-site scan analysis plus PC software for subsequent data evaluation and documentation

[WATCH VIDEO](#)

[Buy Now](#)

DID YOU KNOW?



INTERESTING FACT

Concrete scanners are an accurate way to locate rebar in the concrete.

They can increase productivity by planning in advance to adjust the rebars or getting engineering clearance to core through the rebar.

Scanning the concrete leads to large time savings and avoiding rework.



HILTI

[Click to learn more](#)

NURON

CUTTING & ROUGHENING

CUTTING

AG 6D-22 CORDLESS ANGLE GRINDER (150mm) **NURON**

Powerful cordless angle grinder with brushless motor, SensTech control and advanced safety features for discs up to 150 mm

- Very slim but powerful cordless 150 mm angle grinder engineered for your toughest cutting, finishing and grinding jobs
- More cuts per charge – get more done with one battery thanks to the combination of brushless motor and longer-lasting Nuron batteries
- Ultimate power-to-weight ratio – double the cutting speed but the same weight as previous Hilti cordless grinders
- Innovative ergonomics – slimmer grip with touch-activated SensTech dead-man's function instead of a mechanical paddle, for better comfort and maneuverability
- Upgraded safety features – new 3D Active Torque Control (ATC) for better protection against angle grinder kickback in any direction

Buy Now



CUTTING ABRASIVE DISCS

Choose from a range of Ultimate & Premium abrasive discs designed for cutting metal, steel and stainless steel with angle grinders

Buy Now

NURON



METAL RECIPROCATING SAW BLADES

Choose from a range of Ultimate, Premium & Standard reciprocating saw blades for cutting through thin, medium and thick metal

[Buy Now](#)



DSH 600-22 BATTERY CUT OFF SAW **NURON**

Battery powered cut off saw for concrete, metal and masonry

- Battery-powered concrete saw for heavy-duty tasks – DSH 600-22 gets the same work done as a 60cc petrol cut off saw, but without the fumes, noise, extra maintenance or fuel mix issues
- Long trigger time – you can cut as much concrete with two sets of B 22-255 batteries as with one full tank of petrol thanks to the combination of smarter, more efficient Nuron batteries and cordless-optimized blades
- Lower running costs – no fuel to buy or mix; less maintenance, and up to double the lifespan of a petrol saw thanks to a brushless electric motor
- Improved safety features – fume-free, quieter, lower-vibration cutting, and a fast-acting blade brake
- Better maneuverability – weighing just 8.9 kg (or 12.2 kg including two B 22-255 batteries and a 300 mm blade), this cut off saw is engineered for comfortable handling during all-day cutting

[Buy Now](#)



DIAMOND BLADES

Choose from a range of Ultimate, Premium & Standard diamond cutting discs are designed for maximum speed, lifetime and better handling when cutting in concrete and other minerals

[Buy Now](#)

NURON

TE 60-22 CORDLESS ROTARY HAMMER NURON



Cordless SDS Max (TE-Y) rotary hammer with Active Vibration Reduction and Active Torque Control for heavy-duty concrete drilling and chiseling

- Maximized working time per charge – brushless motor and more efficient Nuron batteries help you get up to 3x more battery run time
- Upgraded safety features – includes Active Torque Control (ATC) to better protect you from uncontrolled spinning if the bit jams, and Active Vibration Reduction (AVR) for increased shielding from vibration
- Longer trigger time – minimal vibration so you can work with fewer interruptions
- Outsizes performance – weighing in at just 8.1 kg (inc. B 22-170 battery), TE 60-22 has the drilling and chipping power you'd expect from a much heavier cordless rotary hammer

[Buy Now](#)

TE-Y SKHM BUSHING TOOL



SDS Max (TE-Y) bushing tool for surface work and layer removal in concrete

- Carbide pins – for smoother surface removal and higher wear resistance
- Pre-assembled – bushing bit and shank in one, delivered ready to use
- Ultra-robust – inductive hardening makes these bushing tools especially resistant to mushrooming, wear and bending
- Certified quality – developed using ISO certified processes and more than 30 years of expertise in chisel design and production
- Built for tough jobs – tested for extreme use, our chisels are made to power through your most demanding demolition work

[Buy Now](#)



HILTI

[Click to learn more](#)

NURON

DRILLING



TE 30-22 CORDLESS ROTARY HAMMER

NURON

Powerful cordless SDS Plus (TE-C) rotary hammer with Active Vibration Reduction and Active Torque Control for concrete drilling and chiseling

- Our most powerful cordless rotary hammer drill, weighing just 5.1 kg (including battery)
- Exceptional drilling speed – drills through rebar up to 200% faster than before
- Extended run time – drills up to twice as long as other rotary hammers thanks to the brushless motor and Nuron batteries
- Versatility – with a wider drilling range and a variety of chisel bits and hole saws available, the TE 30-22 is a versatile tool for any jobsite
- Comprehensive safety features – includes Active Torque Control (ATC) to prevent spinning if the bit jams, and Active Vibration Reduction (AVR) for increased protection from vibration



DD120/160/200

- User-friendly with intuitive features and controls
- Sturdy three-speed gearing for excellent concrete coring performance
- Power control LED indicates optimal drilling speed and maximizes core bit life
- Option of a high-grade drill stand with useful features or a compact drill stand with basic functionality
- Hilti BI+ quick-release connection allows for quick and tool-free core bit changes
- Air-cooled, heavy-duty drive unit with three-speed gearing and convenient controls
- Optional BL quick-release connection for easy core bit changes, no tools required
- Versatile design for a wide range of applications, Sturdy and robust construction
- Power control LED for optimal drilling speed and longer core bit life

Buy Now

NURON



SDS-MAX CORDLESS ROTARY HAMMER

TE 60-22 CORDLESS ROTARY HAMMER **NURON**

Cordless SDS Max (TE-Y) rotary hammer with Active Vibration Reduction and Active Torque Control for heavy-duty concrete drilling and chiseling

- Maximized working time per charge – brushless motor and more efficient Nuron batteries help you get up to 3x more battery run time
- Upgraded safety features – includes Active Torque Control (ATC) to better protect you from uncontrolled spinning if the bit jams, and Active Vibration Reduction (AVR) for increased shielding from vibration
- Longer trigger time – minimal vibration so you can work with fewer interruptions
- Outsizes performance – weighing in at just 8.1 kg (inc. B 22-170 battery), TE 60-22 has the drilling and chipping power you'd expect from a much heavier cordless rotary hammer

[Buy Now](#)

HOLLOW DRILL BITS FOR VIRTUALLY DUST-FREE DRILLING

HOLLOW DRILL BITS

Hollow drill bits designed for virtually dust-free drilling in concrete and reinforced concrete with rotary hammers (SDS Plus and SDS Max)

[Buy Now](#)



DRILLING CONSUMABLES TO MATCH YOUR TOOLS

HAMMER DRILL BITS

Choose from a range of Ultimate & Premium hammer drill bits designed to excel at drilling in concrete and reinforced concrete with rotary hammers (SDS Plus and SDS Max)

[Buy Now](#)

CONNECTION END TO MATCH YOUR TOOL

DRILLING STAND DD-ST 120 SFL

- Fixation mode: Anchor, Anchor and vacuum (optional)
- Designed for use with the DD 200 (DD-ST 200) diamond drilling drive unit
- Extremely sturdy design
- Capacity up to 400 mm, with spacer up to 600 mm
- Comprehensive range of accessories available – such as vacuum pads, spacers, jack screws, water collection systems or fastening kits
- Drilling range up to 400mm diameter without spacer
- Drilling range up to 600mm diameter with spacer
- Fixation with anchor, with optional vacuum pad or with jack screw



[Buy Now](#)

NURON

CLEANING



DESIGNED FOR WET & DRY VACUUM CLEANING

VC 10M-22 CORDLESS VACUUM **NURON**

High-suction wet/dry cordless vacuum with optional backpack for tool dust extraction, including with hollow drill bits

- Built for mobility – compact footprint, large handles and a weight of just 6 kg make this Hilti's most agile jobsite vacuum to date
- Automatic filter cleaning – helps to keep suction high and consistent without interrupting your work (can be switched off for quieter operation)
- Optional backpack straps available – backpack vacuums offer more comfort and agility, while keeping both hands free
- Optional auto-start available – enables on/off via Bluetooth® remote control

Buy Now

NURON

FILLING INSTALLATION



CORDLESS ADHESIVE ANCHOR DISPENSER

HDE 500-22 CORDLESS ADHESIVE DISPENSER **NURON**

Battery-powered hybrid/epoxy adhesive anchor dispenser with smart features to increase speed, safety and reduce waste

- Faster anchoring – cordless adhesive dispensers are a great way to save time, waste and clean-ups with every rod you set
- Significantly reduce mortar wastage – the dosing wheel and dosage recommendations from the Hilti Volume Calculator App are now capable of milliliter accuracy
- Improve fastener safety and reliability – LED indicators give live feedback to confirm the mortar was dispensed correctly or if the cartridge is almost empty
- Repeat and resume functions – smart memory makes it easy to dispense the same amount of mortar every time you pull the trigger, or finish a hole if interrupted by cartridge replacement

[Buy Now](#)

MAKING JOBSITE INSTALLATIONS, SIMPLE, SEAMLESS & PRODUCTIVE

SAFESET FOR A MORE RELIABLE AND PRODUCTIVE REBAR INSTALLATION

- Designed to speed up the installation of anchors and rebar connections and to make them safer and more reliable.
- All the components of SafeSet are covered by international approvals and fit seamlessly together.

[Learn More](#)





DISPENSE THE RIGHT VOLUME EVERYTIME

HILTI VOLUME CALCULATOR APP

The Hilti volume calculator app allow the customer to understand the exact quantity of chemical anchor required per hole up to how much they will need to complete their application on site.

When partnered with the Hilti battery dispenser the customer can save significant quantities of chemical anchor, increase productivity & ensure installation quality.

Download the Hilti Volume calculator in the App Store or Google Play.

APP STORE



GOOGLE PLAY



CHEMICAL ANCHORS FOR STRUCTURAL APPLICATIONS

HIT-HY 200-R V3 ADHESIVE ANCHOR

Ultimate-performance injectable hybrid mortar with approvals for post-installed rebar connections and anchoring structural steel baseplate

- Optimized for rebar – longer working time suitable for post-installed rebar and base material temperatures from -10 to +40°C
- Part of Hilti SafeSet system
- Extensive approvals available – fulfills the requirements of the most demanding ICC-ES and ETA C2 approvals for seismic applications. Holds ETA approvals for rebar and anchor designs with a service life up to 100 years
- Optimized embedment depth – higher mortar strength makes more efficient embedment depths a possibility, and may result in post-installed rebar with performance higher than cast-in bars

Buy Now



HIT-RE 500 V3 EPOXY ANCHOR

Ultimate-performance injectable epoxy mortar with approvals for rebar connections and heavy-duty anchoring

- High performance and technical superiority as per international approvals
- Suitable for diamond-cored holes – when prepared using the TE-YRT roughening tool
- Injectable epoxy suitable for all-year use – cures at temperatures down to -5°C
- Longer working time – allows greater flexibility during installation
- Suitable for water-filled holes and underwater applications

Buy Now



HIT-RE 100 EPOXY ANCHOR

High-performance injectable epoxy mortar with everyday approvals for anchoring and rebar connections in concrete

- Good performance in cracked and uncracked concrete
- Suitable for indoor and outdoor applications as well as use in all base material conditions (dry, wet, water-filled, underwater)
- Long working time allows greater flexibility in installation
- Extensive range of accessories available (e.g. piston plugs, steel brushes, cordless electric dispenser)
- Easy cleaning method simplifying installation

Buy Now



CHEMICAL ANCHORS FOR NON-STRUCTURAL APPLICATIONS

HIT-HY 170 ADHESIVE ANCHOR

High-performance injectable hybrid mortar with everyday approvals for anchoring in concrete and masonry

- Suitable for use in masonry materials, for post-installed rebars, in cracked and uncracked concrete with anchor rods in accordance with ETA report
- Automatic hole cleaning with TE-CD and TE-YD drill bits in combination with Hilti vacuum cleaners
- Extensive range of accessories available (e.g. sleeves, cordless electric dispenser)
- Wide working concrete temperature range from -5°C to +40°C (except in solid brick)
- Working time optimised for anchoring applications in concrete and masonry

[Buy Now](#)



HIT-HY 10 ADHESIVE ANCHOR

- The economical injection mortar solution that can replace virtually all grout fastenings
- Suitable for post-installed rebar and concrete anchoring applications in accordance with Hilti technical data
- Compatible with Hilti's full range of accessories (e.g. cordless electric dispenser, steel brushes, piston plug)
- Available in 580 ml hard cartridge, suitable for use under severe on-site conditions
- Allows flexible installation due to the long working time

[Buy Now](#)



NURON

INSPECT



ON-SITE TESTING BY HILTI ENGINEERS

You can use on-site testing in the design phase and after installation of a fastening system

- During the design phase – determine the resistance of a base material and which fastening system to use
- After installing anchor systems – determine quality and safety. This can be required by building owners or to ensure compliance to local guidelines
- Determine the resistance values of an unknown base material or of base materials, which are different and not in the original approval document.
- Check the quality and safety of fastening systems after installation, by testing part of the installation.

[Learn More](#)

DID YOU KNOW?

INTERESTING FACT

On-site testing helps you to determine

- The load resistance and quality of a design is OK.
- The resistance values of an unknown base material, which are different and not in the original approval.
- The quality and safety of post-installed rebar after installation, by testing part of the installation.

NURON

DEMOLITION



LIGHT DUTY WALL CHISELING

TE 500-22 CORDLESS CHIPPING HAMMER **NURON**

Cordless SDS Max (TE-Y) demolition and chipping hammer for chiseling in concrete or masonry, with Active Vibration Reduction

- More power, more possibilities – TE 500-22 chipping hammers can perform all the full range of tasks as comparable corded demolition hammers
- Reduced worker fatigue – Active Vibration Reduction (AVR) helps minimize your exposure to vibration, better protecting your health and reducing interruptions on the jobsite
- Virtually dust-free demolition – contributes to safer jobsites when used with a DRS-B dust removal system connected to a compatible Hilti vacuum cleaner



Buy Now

CORDLESS JACKHAMMER FOR FLOOR BREAKING

TE 2000-22 CORDLESS JACKHAMMER **NURON**

- Start the job faster – independence from the often unreliable main power supply and easy portability help eliminate common delays at the start of the workday
- Unbeatable maneuverability – 10 kg lighter and much slimmer than comparable battery-powered jackhammers, the TE 2000-22 is ideal for medium-scale and controlled demolition jobs where handling, tool control and mobility are most important for productivity
- Unprecedented work-per-charge – demolish half a ton of concrete per charge on one pair of revolutionary Nuron B 22-255 batteries, or 1.5 tons by adding the optional large battery case
- Virtually dust-free demolition – up to 95% reduction of fine silica dust when used with a TE DRS-B dust removal system and compatible Hilti vacuum cleaner



Buy Now

NURON



SELECT THE RIGHT CHISEL FOR YOUR APPLICATION

POINTED CHISELS

- Pointed chisel bits for chipping and demolishing concrete using an electric jackhammer, breaker or rotary hammer

[Buy Now](#)

FLAT CHISELS

Flat chisel bits for chipping, channeling and demolishing concrete using an electric jackhammer, breaker or rotary hammer

[Buy Now](#)

SPECIAL CHISELS

We have a wider range of chisels such as scaling chisels and floor scrapers on the website.

[Buy Now](#)



HILTI

[Click to learn more](#)

NURON

CLEANING



DESIGNED FOR WET & DRY VACUUM CLEANING

VC 10M-22 CORDLESS VACUUM **NURON**

- Built for mobility – compact footprint, large handles and a weight of just 6 kg make this Hilti's most agile jobsite vacuum to date
- Automatic filter cleaning – helps to keep suction high and consistent without interrupting your work (can be switched off for quieter operation)
- Optional backpack straps available – backpack vacuums offer more comfort and agility, while keeping both hands free
- Optional auto-start available – enables on/off via Bluetooth® remote control

Buy Now

NURON

DRILLING & ANCHORING APPLICATION

HILTI

[Click to
learn more](#)

DRILLING & ANCHORING APPLICATION



DESIGN

80% TIME REDUCTION with PROFIS Engineering



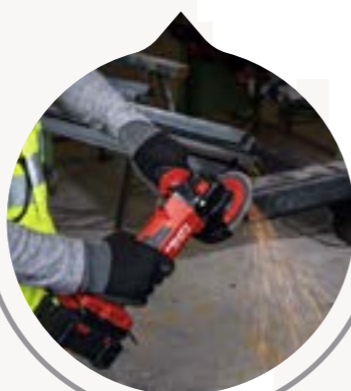
MEASURING

Green laser provides **3 TIMES** more **VISIBILITY**



CUTTING

EFFORTLESSLY cut pipes and channels with Hilti cordless cutting tools



DRILLING

Hilti innovations in Drills, Bits can **SAVE UP TO 50%**



ANCHORING

Anchors can be set **4X FASTER** with piece of mind!



INSPECTION

DETERMINE proof loading and pull-out resistance on the jobsite



BOLTING

GRAB YOUR GRINDER and go!



NURON

DESIGN

PROFIS ENGINEERING SUITE

Cloud-based PROFIS engineering software for designing concrete-to-steel and concrete-to-concrete connections according to a wide range of codes and approvals

Capabilities: Anchoring steel to concrete, Anchoring steel to masonry, Concrete overlay, Concrete over metal deck, Handrail fastening, Post-installed rebar

Codes and approvals: Supports many country-specific design methods, and can generate detailed design reports to easily verify compliance.

Training and support: No matter if you are a newcomer or an expert, we offer technical training and demonstrations (face-to-face and online) to guarantee you can exploit the full potential of the software.

Buy Now



DID YOU KNOW?



INTERESTING FACT

PROFIS Engineering is an innovative design software that assists the specifying engineer to optimise the MEP design for the most efficient installation

NURON

MEASURE & SCAN



PD-E LASER METER

Outdoor laser meter with integrated viewfinder for measurements up to 200 m

- High-quality laser module enables long-range measurements even under the toughest outdoor conditions
- Built-in optical viewfinder for outdoor measurements
- Built-in 360 degree tilt sensor and smart estimation functions support measurements in challenging situations

Buy Now



HILTI

[Click to learn more](#)

NURON



SCANNING

PS 85 WALL SCANNER

Easy-to-use wall scanner and stud finder for hit prevention when drilling or cutting near embedded objects

- Versatile and user-friendly wall scanner to help you avoid damage caused by drilling in the wrong place
- Easier to use – large display, efficient menus and the option to export scan data via SD card
- Upgraded ergonomics – light with large handle to keep the tool firmly in your grip
- Built to last – shock- and dust- resistant to better withstand construction site conditions
- Hilti battery platform – power this wall scanner using the same Li-ion battery as all your other Hilti 12V cordless tools

[Buy Now](#)

ALIGNMENT

PM 40-MG MULTI-LINE LASER

- Multi-line laser with 3 green lines for plumbing, leveling, aligning and squaring
- The most versatile multi-line laser for precise and fast 360° aligning, leveling and squaring
- Rechargeable B12 Li-ion battery allows up to 1.5 days of continuous layout work
- Metal Blade Axicon technology – protective housing for precision components to keep your multi-line lasers accurate for longer
- Out-of-level and low-battery alerts – help to prevent mistakes and unexpected downtime
- Laser class 2 – no special precautionary measures needed

[Buy Now](#)



PR 30-HVSG A12 INDOOR ROTATING LASER LEVEL

- Indoor rotary laser level with highly visible green beam and automatic functions for virtually any interior jobsite layout tasks
- One-person operation – the fastest way to align control points over long distances
- Built to last – engineered to US Military standards (MIL-STD-810G) with head-mounted bumpers, four shock-absorbing handles and IP66 protected housing to maintain laser accuracy in rough jobsite conditions
- “Catch-me” function to boost visibility of the rotating laser
- Paired remote control to avoid interference with other tools on the jobsite
- Automatic slope setting up to +/-5°

[Buy Now](#)



NURON

CUTTING



AG 6D-22 CORDLESS ANGLE GRINDER (150 mm) **NURON**

Powerful cordless angle grinder with brushless motor, SensTech control and advanced safety features for discs up to 150 mm

- Very slim but powerful cordless 150 mm angle grinder engineered for your toughest cutting, finishing and grinding jobs
- Ultimate power-to-weight ratio – double the cutting speed but the same weight as previous Hilti cordless grinders
- Innovative ergonomics – slimmer grip with touch-activated SensTech dead-man's function instead of a mechanical paddle, for better comfort and maneuverability
- Upgraded safety features – new 3D Active Torque Control (ATC) for better protection against angle grinder kickback in any direction

Buy Now



SPN 6-22 NIBBLER **NURON**

- High-capacity cordless nibbler for cutting sheet metal and profiles with more speed and minimal distortion (Nuron battery platform)
- Ultimate versatility – high cutting capacity, interchangeable heads (available separately) and adjustable speed so you can cut flat, corrugated, trapezoidal and profiled metal sheet using the same nibbler
- Safer metalwork – cordless nibblers give professional sheet metal contractors a spark-free, low-vibration solution for precise, fast cuts through sheet metal
- Faster freeform metal cutting – 360° head rotation for near-instant change of cutting direction and better access for cutting and notching in hard-to-reach places
- Agile handling – toolless head change with slim, ergonomic grip, balanced body and lock-on switch deliver more precision and comfort when cutting sheet metal all day

Buy Now

NURON

CUTTING CONSUMABLES TO MATCH YOUR TOOLS

CUTTING ABRASIVE DISCS

Choose from a range of Ultimate, Premium & Standard abrasive discs designed for cutting metal, steel and stainless steel with angle grinders



[Buy Now](#)



HILTI

[Click to learn more](#)

NURON

DRILLING



SMALL HOLE DIAMETER

TE 2-22 CORDLESS ROTARY HAMMER **NURON**

Compact and light weight SDS Plus cordless rotary hammer with pistol grip for best maneuverability when drilling overhead

- Unbeatable grip and agility – Our lightest and slimmest cordless rotary hammer, with improved in-line pistol grip
- Virtually dust-free drilling – when used with a Hilti DRS-D or DRS-S dust removal attachment or hollow drill bit and compatible Hilti vacuum cleaner
- Safer work at heights – use the included belt hook and optional tool tether to free your hands without compromising on tool drop protection

Buy Now



MEDIUM HOLE DIAMETER

TE 6-22 CORDLESS ROTARY HAMMER **NURON**

Versatile SDS Plus cordless rotary hammer with wide drilling range, chipping function and quick-change chuck

- Performance, versatility and ergonomics in one – the TE 6-22 cordless rotary hammer has a wide drilling range, chiseling function and more comfort for all-day use.
- Improved handling – better tool balance and contoured grips so you can drill, chip or drive more comfortably in any position
- Comprehensive safety features – includes Active Torque Control (ATC) to better protect you from uncontrolled spinning if the bit sticks, and Active Vibration Reduction (AVR) for increased shielding from vibration

Buy Now

NURON

LARGE HOLE DIAMETER

TE 30-22 CORDLESS ROTARY HAMMER NURON

Powerful cordless SDS Plus (TE-C) rotary hammer with Active Vibration Reduction and Active Torque Control for concrete drilling and chiseling

- Our most powerful SDS Plus cordless rotary hammer drill ever, still weighing just 5.1 kg (including B 22-170 battery)
- Exceptional drilling speed – drills through rebar up to 200% faster than predecessors
- More run time per charge – drills up to twice as long as comparable SDS Plus rotary hammers thanks to the combination of brushless motor and revolutionary Nuron batteries
- Versatility – with a wider optimal drilling range and extensive range of chisel bits and hole saws available, TE 30-22 is an extremely versatile tool with a wide range of capabilities for any jobsite
- Comprehensive safety features – includes Active Torque Control (ATC) to better protect you from uncontrolled spinning if the bit jams, and Active Vibration Reduction (AVR) for increased shielding from vibration



[Buy Now](#)

DRILLING CONSUMABLES TO MATCH YOUR TOOLS

HAMMER DRILL BITS

- Choose from a range of Ultimate & Premium hammer drill bits designed to excel at drilling in concrete and reinforced concrete with rotary hammers (SDS Plus and SDS Max)



[Buy Now](#)

HOLLOW DRILL BITS FOR VIRTUALLY DUST-FREE DRILLING

HOLLOW DRILL BITS

Hollow drill bits designed for virtually dust-free drilling in concrete and reinforced concrete with rotary hammers (SDS Plus and SDS Max)



[Buy Now](#)



NURON

ANCHORING



CHEMICAL ANCHORING SOLUTIONS

HDE 500-22 CORDLESS ADHESIVE DISPENSER **NURON**

Battery-powered hybrid/epoxy adhesive anchor dispenser with smart features to increase speed, safety and reduce waste

- Faster anchoring – cordless adhesive dispensers are a great way to save time, waste and clean-ups with every rod you set
- Significantly reduce mortar wastage – the dosing wheel and dosage recommendations from the Hilti Volume Calculator App are now capable of milliliter accuracy
- Improve fastener safety and reliability – LED indicators give live feedback to confirm the mortar was dispensed correctly or if the cartridge is almost empty
- Repeat and resume functions – smart memory makes it easy to dispense the same amount of mortar every time you pull the trigger, or finish a hole if interrupted by cartridge replacement

Buy Now

HILTI VOLUME CALCULATOR APP

The Hilti volume calculator app allow the customer to understand the exact quantity of chemical anchor required per hole up to how much they will need to complete their application on site.

When partnered with the Hilti battery dispenser the customer can save significant quantities of chemical anchor, increase productivity & ensure installation quality.

Download the Hilti Volume calculator in the App Store or Google Play

APP STORE



GOOGLE PLAY



HILTI

Click to learn more



CHEMICAL ANCHORS FOR STRUCTURAL APPLICATIONS

HIT-HY 200-R V3 ADHESIVE ANCHOR



Ultimate-performance injectable hybrid mortar with approvals for post-installed rebar connections and anchoring structural steel baseplate

- Optimized for rebar – longer working time suitable for post-installed rebar and base material temperatures from -10 to +40°C
- Part of Hilti SafeSet system – no extra hole cleaning may be needed if you're drilling with TE-CD or TE-YD hollow drill bits in combination with Hilti vacuum cleaners
- Extensive approvals available – fulfills the requirements of the most demanding ICC-ES and ETA C2 approvals for seismic applications. Holds ETA approvals for rebar and anchor designs with a service life up to 100 years
- Optimized embedment depth – higher mortar strength makes more efficient embedment depths a possibility, and may result in post-installed rebar with performance higher than cast-in bars

[Buy Now](#)



HIT-RE 500 V3 EPOXY ANCHOR



Ultimate-performance injectable epoxy mortar with approvals for rebar connections and heavy-duty anchoring

- High performance and technical superiority as per international approvals
- Suitable for diamond-cored holes – when prepared using the TE-YRT roughening tool
- Injectable epoxy suitable for all-year use – cures at temperatures down to -5°C / 23°F
- Longer working time – allows greater flexibility during installation
- Suitable for water-filled holes and underwater applications

[Buy Now](#)



CHEMICAL ANCHORS FOR NON-STRUCTURAL APPLICATIONS

HIT-HY 170 ADHESIVE ANCHOR

High-performance injectable hybrid mortar with everyday approvals for anchoring in concrete and masonry

- Suitable for use in masonry materials, for post-installed rebars, in cracked and uncracked concrete with anchor rods in accordance with ETA report
- Automatic hole cleaning with TE-CD and TE-YD drill bits in combination with Hilti vacuum cleaners
- Wide working concrete temperature range from -5°C to +40°C (except in solid brick)
- Working time optimised for anchoring applications in concrete and masonry

[Buy Now](#)



CHEMICAL ANCHORS FOR NON-STRUCTURAL APPLICATIONS

HIT-HY 10 ADHESIVE ANCHOR

Economical injectable hybrid mortar for concrete and masonry

- Suitable for use on all base materials
- HIT-SC composite sleeves allow greater flexibility through use of multiple sleeve combinations and also save mortar by allowing accurate dosing in hollow base materials
- Contains no styrene or other prohibited substances and is virtually odourless

[Buy Now](#)

NURON



MECHANICAL ANCHORING SOLUTIONS

SIW 6-22 1/2" CORDLESS IMPACT WRENCH **NURON**

- Advanced cordless performance – faster concrete screw anchor setting from a more compact tool, thanks to the combination of brushless motor and next-generation Nuron batteries
- Durable build – brushless motor and friction (hog) ring anvil contribute to the extreme longevity of our cordless impact wrenches
- Faster anchor setting with more control – two speed settings and improved LED light so you can set large fasteners more quickly, or maintain precise control when needed

[Buy Now](#)

HUS3-H 8/10/14 SCREW ANCHOR

Ultimate-performance screw anchor for quicker permanent and temporary fastening in concrete

- Higher productivity – less drilling and fewer operations than with conventional anchors
- Three embedment depths for maximum design flexibility
- abZ (DiBt) approval for reusability in fresh concrete for temporary applications – fully-approved reusable system with gauges for all available diameters

[Buy Now](#)



HST3 WEDGE ANCHOR

Ultimate-performance expansion anchor for cracked concrete and seismic (CS)

- Highest resistance to meet geometrically challenging requirements, e.g. reduced member thickness, smallest spacing and edge distances
- Increased undercut percentage in combination with optimized coating
- Greater flexibility thanks to two embedment depths included in the ETA
- Minimum edge and spacing distances reduced by up to 25% compared to HST

[Buy Now](#)



HSA WEDGE ANCHOR

High-performance wedge anchor for everyday static in uncracked concrete

- First ETA-compatible stud anchor for torque-controlled setting using an impact wrench and Hilti torque bar for higher productivity in serial applications
- Excellent edge and spacing distances
- 3 embedment depths offering maximum flexibility

[Buy Now](#)



HSL4-B HEAVY-DUTY WEDGE ANCHOR

Ultimate-performance heavy-duty torque-controlled wedge anchor with approvals for concrete (carbon steel)

- High tensile and shear load capacity
- Force-controlled expansion which allows follow-up expansion
- Special safety cap helps ensure proper installation torque is applied even if not using a calibrated torque wrench
- ETA Option 1 for cracked and uncracked concrete
- ICC-ES/AC 193 for cracked or uncracked concrete and seismic applications

[Buy Now](#)



NURON

INSPECTION



ONSITE TESTING BY HILTI ENGINEERS **NURON**

You can use onsite testing in the design phase and after installation of a fastening system

- During the design phase – determine the resistance of a base material and which fastening system to use
- After installing anchor systems – determine quality and safety. This can be required by building owners or to ensure compliance to local guidelines
- Determine the resistance values of an unknown base material or of base materials, which are different and not in the original approval document.
- Check the quality and safety of fastening systems after installation, by testing part of the installation.

[Learn More](#)

HILTI

[Click to learn more](#)

NURON

BOLT TIGHTENING



SIW 8-22 1/2" CORDLESS IMPACT WRENCH **NURON**

You can use onsite testing in the design phase and after installation of a fastening system

- During the design phase – determine the resistance of a base material and which fastening system to use
- After installing anchor systems – determine quality and safety. This can be required by building owners or to ensure compliance to local guidelines
- Determine the resistance values of an unknown base material or of base materials, which are different and not in the original approval document.
- Check the quality and safety of fastening systems after installation, by testing part of the installation.

[Buy Now](#)



IMPACT SOCKETS

Long and short impact sockets with 1/4", 3/8", 1/2" and 3/4" connection ends for anchoring and bolting

[Buy Now](#)

METAL FABRICATION APPLICATION



SURFACE PREPRATION



CUTTING

SAVE UP TO **50%** on your workshop grinder fleet cost!



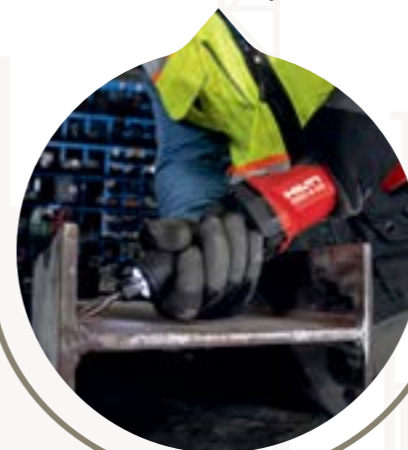
DRILLING

POWER FOR ALL! Hilti cordless drills, wrenches and drivers will stop at nothing.



GRINDING

UNMATCHED PERFORMANCE and services to ensure your fabrication shop never stops!



ASSEMBLY



NURON

SURFACE PREPARATION



AG 6D-22 CORDLESS ANGLE GRINDER (150 mm) **NURON**

Powerful cordless angle grinder with brushless motor, SensTech control and advanced safety features for discs up to 150 mm

- Very slim but powerful cordless 150 mm angle grinder engineered for your toughest cutting, finishing and grinding jobs
- Ultimate power-to-weight ratio – double the cutting speed but the same weight as previous Hilti cordless grinders
- Innovative ergonomics – slimmer grip with touch-activated SensTech dead-man's function instead of a mechanical paddle, for better comfort and maneuverability
- Upgraded safety features – new 3D Active Torque Control (ATC) for better protection against angle grinder kickback in any direction

[Buy Now](#)

AG 5D-22 CORDLESS ANGLE GRINDER (125 MM) **NURON**

Cordless brushless angle grinder with dead man's switch for everyday cutting and grinding with discs up to 125 mm

- Compact, cordless 125 mm angle grinder for everyday cutting and grinding around the jobsite
- More cuts per charge – upgraded run time thanks to the combination of brushless motor and longer-lasting Nuron batteries
- Active Torque Control (ATC) – stops the grinder from spinning if the disc jams, Comprehensive safety features – dead-man's paddle switch, disc brake, soft start and auto shut-off
- Improved ergonomics – low weight and comfortable balance makes the grinder less tiring to use in any position

[Buy Now](#)

GRINDING ABRASIVE DISCS

Choose from a range of Ultimate and Premium abrasive discs designed for grinding metal, steel and stainless steel

NURON

CUTTING



AG 6D-22 CORDLESS ANGLE GRINDER (150 mm) **NURON**

Powerful cordless angle grinder with brushless motor, SensTech control and advanced safety features for discs up to 150 mm

- Very slim but powerful cordless 150 mm angle grinder engineered for your toughest cutting, finishing and grinding jobs
- Ultimate power-to-weight ratio – double the cutting speed but the same weight as previous Hilti cordless grinders
- Innovative ergonomics – slimmer grip with touch-activated SensTech dead-man's function instead of a mechanical paddle, for better comfort and maneuverability
- Upgraded safety features – new 3D Active Torque Control (ATC) for better protection against angle grinder kickback in any direction

Buy Now



AG 5D-22 CORDLESS ANGLE GRINDER (125 MM) **NURON**

Cordless brushless angle grinder with dead man's switch for everyday cutting and grinding with discs up to 125 mm

- Compact, cordless 125 mm angle grinder for everyday cutting and grinding around the jobsite
- More cuts per charge – upgraded run time thanks to the combination of brushless motor and longer-lasting Nuron batteries
- Active Torque Control (ATC) – stops the grinder from spinning if the disc jams
- Comprehensive safety features – dead-man's paddle switch, disc brake, soft start and auto shut-off
- Improved ergonomics – low weight and comfortable balance makes the grinder less tiring to use in any position

Buy Now



CUTTING ABRASIVE DISCS

Choose from a range of Ultimate, Premium & Standard abrasive discs designed for cutting metal, steel and stainless steel with angle grinders

[Buy Now](#)



SC 4MR-22 CORDLESS CIRCULAR SAW FOR METAL **NURON**

- Cordless circular saw with minimised weight and size for overhead cuts up to 51 mm | 2" depth (Nuron battery platform)
- One-handed design – weighing just 2.2 kg, this is one of the most agile and light metal circular saws ever made by Hilti
- Higher productivity on your jobsites – the highly efficient and virtually maintenance-free brushless motor helps you get the job done without interruptions
- On the Nuron battery platform – cordless circular saws without compromise thanks to longer-lasting batteries, energy-saving blades and a range of services to keep you more productive, today and tomorrow
- Compact design – right-side blade and chip collector help to make cutting in cramped spaces easier
- One-handed design – weighing just 4.8 lbs, this is one of the most agile and light metal circular saws ever made by Hilti

[Buy Now](#)



METAL CIRCULAR SAW BLADES

Choose from a range of Ultimate & Premium circular saw blades, with different diameters, designed to cut metal, stainless steel and aluminum with circular saws

[Buy Now](#)



SJD 6-22 CORDLESS JIGSAW **NURON**

Powerful barrel-grip cordless jigsaw with longer run time for precise straight or curved cuts

- Uncompromised cordless performance – high-output Nuron batteries deliver enough cutting speed and longer run time to replace your corded jigsaws, even when cutting tougher or thicker materials
- Better maneuverability – low weight and barrel grip make this cordless jigsaw easier to guide comfortably from above or below your workpiece
- Safer jobsites – rapid blade brake, Active Vibration Reduction (AVR) and optional dust removal accessories all help to make using jigsaws safer

[Buy Now](#)



METAL JIG SAW BLADES

Choose from a range of Premium & Standard jig saw blades to cut metal

[Buy Now](#)

NURON

DRILLING

LIGHT TO MEDIUM STEEL WORK

SF 4H-22 CORDLESS HAMMER DRILL DRIVER NURON

Compact-class hammer drill driver with Active Torque Control for everyday drilling and driving, especially in hard-to-reach places

- More productive work – compact and capable cordless hammer drill driver for working in tight spaces or overhead
- Faster drilling and driving – delivers the highest-RPM and torque from any Hilti compact hammer drill driver thanks to high-output Nuron batteries
- Built to last – full metal chuck, brushless motor and optimized cooling to better withstand intense use under tough jobsite conditions
- Advanced safety features – Active Torque Control (ATC) helps to prevent the tool body from uncontrolled spinning if the drill bit sticks, and an LED work light in the base provides a clear view of your work area

Buy Now

MEDIUM TO HEAVY STEEL WORK

SF 6H-22 CORDLESS HAMMER DRILL DRIVER NURON

Power-class hammer drill driver with Active Torque Control and advanced ergonomics for universal drilling and driving on wood, metal and masonry

- High-speed, high-torque cordless hammer drill driver built to help you save time with every hole you drill or screw you drive, including in masonry
- Uncompromised cordless performance – drill and drive more per charge at consistently high speed thanks to Nuron batteries and the brushless motor
- Built to last – full metal chuck, brushless motor, rubber bumpers and optimized cooling to better withstand intense use under tough jobsite conditions
- Advanced safety features – Active Torque Control (ATC) helps to prevent the tool body from uncontrolled spinning if the drill bit sticks, and an LED work light in the base provides a clear view of your work area

Buy Now

[Click to learn more](#)

NURON



CONSUMABLES TO MATCH YOUR TOOLS

CARBIDE TIPPED HOLE SAW

Find out how our hole saws are designed for fast and precise cutting in metal, wood, drywall or masonry

*These hole saws require the use of a pilot hole bit to centre the hole

[Buy Now](#)



HSS BITS

Choose from a range of Ultimate and Premium high-speed steel (HSS) bits, HSS sets and HSS cobalt bits for metal drilling

[Buy Now](#)



NURON

WELD CLEANING



AG 6D-22 CORDLESS ANGLE GRINDER (150 mm) **NURON**

Powerful cordless angle grinder with brushless motor, SensTech control and advanced safety features for discs up to 150 mm

- Very slim but powerful cordless 150 mm angle grinder engineered for your toughest cutting, finishing and grinding jobs
- Ultimate power-to-weight ratio – double the cutting speed but the same weight as previous Hilti cordless grinders
- Innovative ergonomics – slimmer grip with touch-activated SensTech dead-man's function instead of a mechanical paddle, for better comfort and maneuverability
- Upgraded safety features – new 3D Active Torque Control (ATC) for better protection against angle grinder kickback in any direction

Buy Now



AG 5D-22 CORDLESS ANGLE GRINDER (125 MM) **NURON**

Cordless brushless angle grinder with dead man's switch for everyday cutting and grinding with discs up to 125 mm

- Compact, cordless 125 mm angle grinder for everyday cutting and grinding around the jobsite
- More cuts per charge – upgraded run time thanks to the combination of brushless motor and longer-lasting Nuron batteries
- Active Torque Control (ATC) – stops the grinder from spinning if the disc jams
- Comprehensive safety features – dead-man's paddle switch, disc brake, soft start and auto shut-off
- Improved ergonomics – low weight and comfortable balance makes the grinder less tiring to use in any position

Buy Now

NURON



AG 4S-22 CORDLESS ANGLE GRINDER (125 MM)

Cordless brushless angle grinder with adjustable speed **NURON**, day cutting and grinding with discs up to 125 mm

- Slimline cordless angle grinder with speed control for improved working comfort and control when working on a wide range of materials
- More cuts per charge – lasts up to 10% longer and cuts up to 10% faster than previous Hilti angle grinders, thanks to the combination of brushless motor and revolutionary Nuron batteries
- Suitable for stainless steel – precise speed control from 3400-7600 rpm, so you can use the same grinder for rough material removal and precise surface finishing
- Advanced safety features – Active Torque Control (ATC) for improved protection from angle grinder kickback if the disc gets stuck

[Buy Now](#)



GRINDING ABRASIVE DISCS

Choose from a range of Ultimate and Premium abrasive discs designed for grinding metal, steel and stainless steel

[Buy Now](#)



HILTI

[Click to learn more](#)

NURON

ASSEMBLY & MARKING



SF 6H-22 CORDLESS HAMMER DRILL DRIVER **NURON**

Power-class hammer drill driver with Active Torque Control and advanced ergonomics for universal drilling and driving on wood, metal and masonry

- High-speed, high-torque cordless hammer drill driver built to help you save time with every hole you drill or screw you drive, including in masonry
- Uncompromised cordless performance – drill and drive more per charge at consistently high speed thanks to Nuron batteries and the brushless motor
- Built to last – full metal chuck, brushless motor, rubber bumpers and optimized cooling to better withstand intense use under tough jobsite conditions
- Advanced safety features – Active Torque Control (ATC) helps to prevent the tool body from uncontrolled spinning if the drill bit sticks, and an LED work light in the base provides a clear view of your work area

Buy Now



SID 6-22 CORDLESS IMPACT DRIVER **NURON**

Power-class cordless impact driver with high-speed brushless motor and precise handling to help you save time on high-volume fastening jobs

- Uncompromising speed – the 3600 rpm brushless motor and rapid trigger response help you save time on every single fastening
- Brushless motor delivers our longest ever working time per charge from a cordless impact driver
- Extra-compact size – at just 137 mm from front to back, this is the ideal cordless impact driver when you need power in tight spaces
- LED light ring around the chuck – for a clearer, glare-free view of your work area

Buy Now

NURON



NUTS & BOLTS

SIW 6-22 1/2" CORDLESS IMPACT WRENCH **NURON**

Power-class cordless impact wrench with 1/2" friction ring anvil for a wide range of concrete anchoring and steel or wood bolting

- Advanced cordless performance – faster concrete screw anchor setting from a more compact tool, thanks to the combination of brushless motor and next-generation Nuron batteries
- Durable build – brushless motor and friction (hog) ring anvil contribute to the extreme longevity of our cordless impact wrenches
- Faster anchor setting with more control – two speed settings and improved LED light so you can set large fasteners more quickly, or maintain precise control when needed
- Exceptional ergonomics – slimmer, 52 mm shorter and 0.4 kg lighter than its predecessor, helping to delay fatigue when bolting and anchoring all day

[Buy Now](#)

SIW 8-22 1/2" CORDLESS IMPACT WRENCH **NURON**

Ultimate-class, high-torque cordless impact wrench with 1/2" friction ring anvil for structural bolting and anchoring

- Uncompromised cordless power – the highest-torque cordless impact wrench you can get from Hilti, now capable of structural bolting up to M24
- Durable build – brushless motor and friction (hog) ring anvil contribute to the extreme longevity of our cordless impact wrenches
- Faster anchor setting with more control – two speed settings and improved LED light so you can set HUS concrete anchors faster

[Buy Now](#)





Hilti India Pvt. Ltd.
Cyber City, Gurgaon -122002
1800102 6400 | www.hilti.in