

# FIRESTOP COMPOSITE SHEET CFS-COS

(Galvanized Steel Version)

## Applications

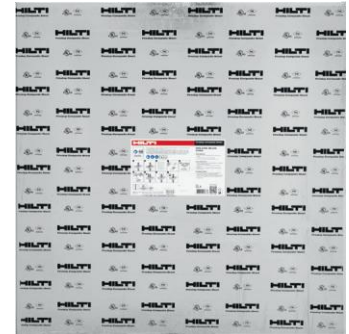
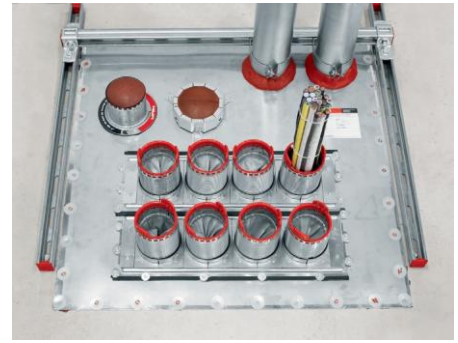
- For use with large wall and floor fire-rated assemblies
- Compatible with Hilti Speed sleeve and gangplate for floor gang applications
- Intumescent sheet with galvanized steel backing for firestopping large openings

## Advantages

- For use with fire-rated assemblies (up to 4 hrs)
- Compatible with Hilti sleeve devices for easy cable management
- Can be fastened using Hilti GX/BX tools — no need to drill or set anchors
- Multi-board systems allow very large openings
- Fast installation system requires fewer anchors

## Installation instructions

- See Hilti literature or third-party listings for complete application and installation details



## Technical Data

Application temperature range	-22 to 118 °F (-30 to 48 °C)
Temperature resistance range	-22 to 250 °F (-30 to 121 °C)
Expansion ratio (unrestricted, up to)	1:25
Surface burning characteristics UL 723 (ASTM E84)	Flame spread: 0 Smoke development: 20
Shelf life <sup>1)</sup>	Not relevant
Storage and transportation temperature range	-22 to 118 °F (-30 to 48 °C)
Color	Silver
Acoustics performance	Test report available
Dimensions (LxW)	36 x 36 in
Thickness (in)	0.10" ± 0.03"
Intumescent	Yes

<sup>1)</sup> at 77°F (25°C) and 50% relative humidity; from date of manufacture



FILL VOID OR CAVITY MATERIAL FOR USE IN THROUGH-PENETRATION FIRESTOP SYSTEMS  
SEE UL FIRE RESISTANCE DIRECTORY  
8817

